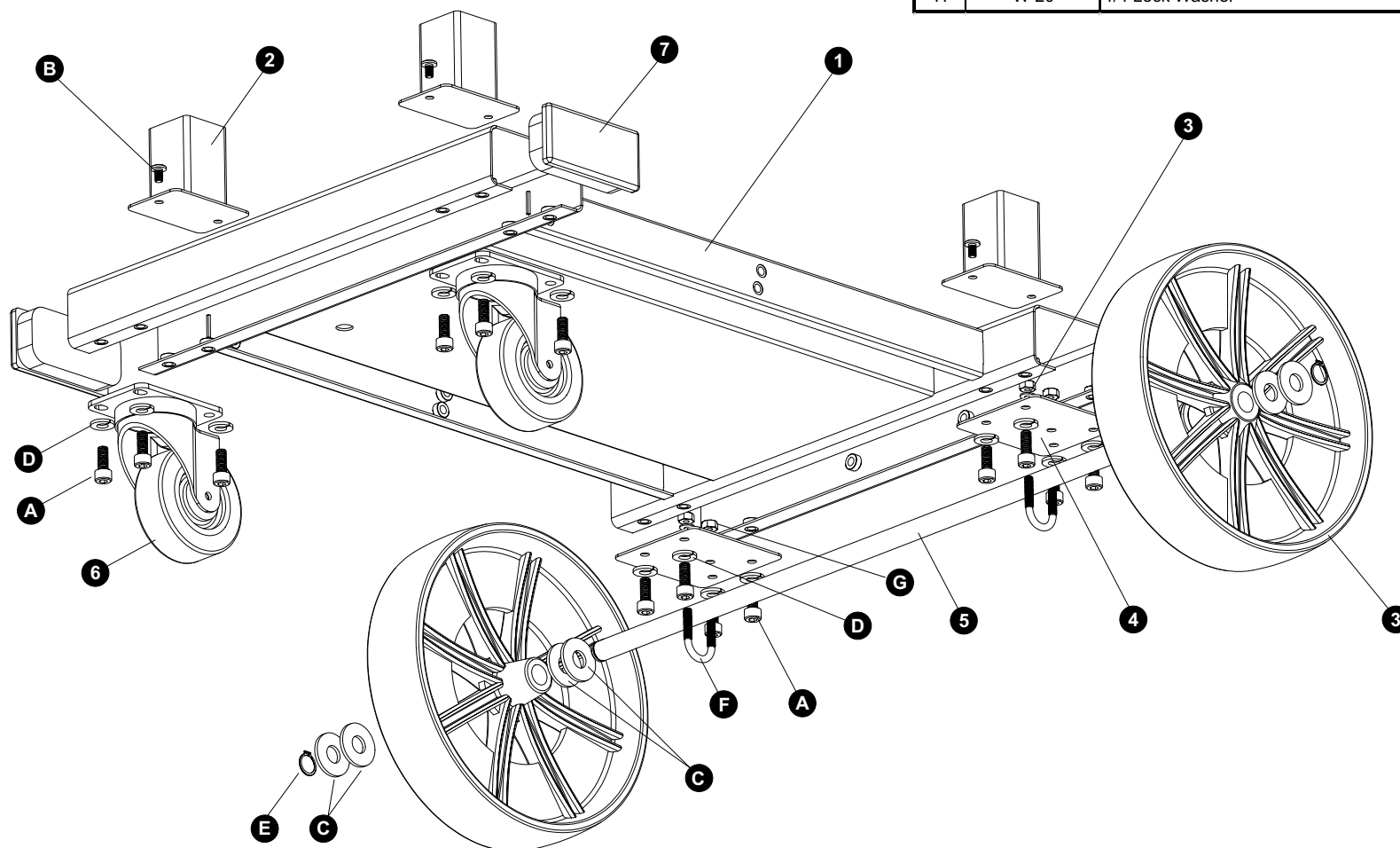
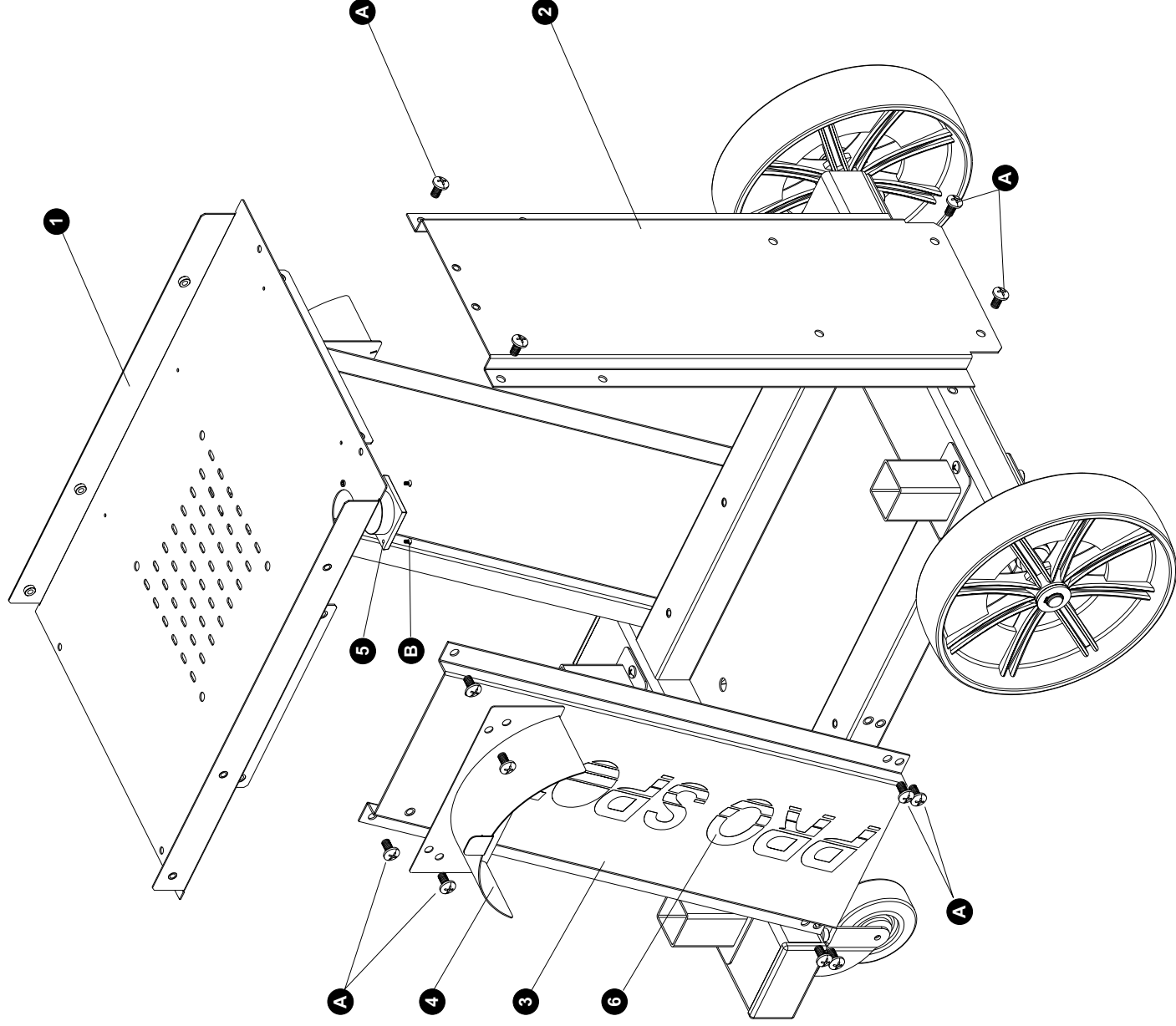


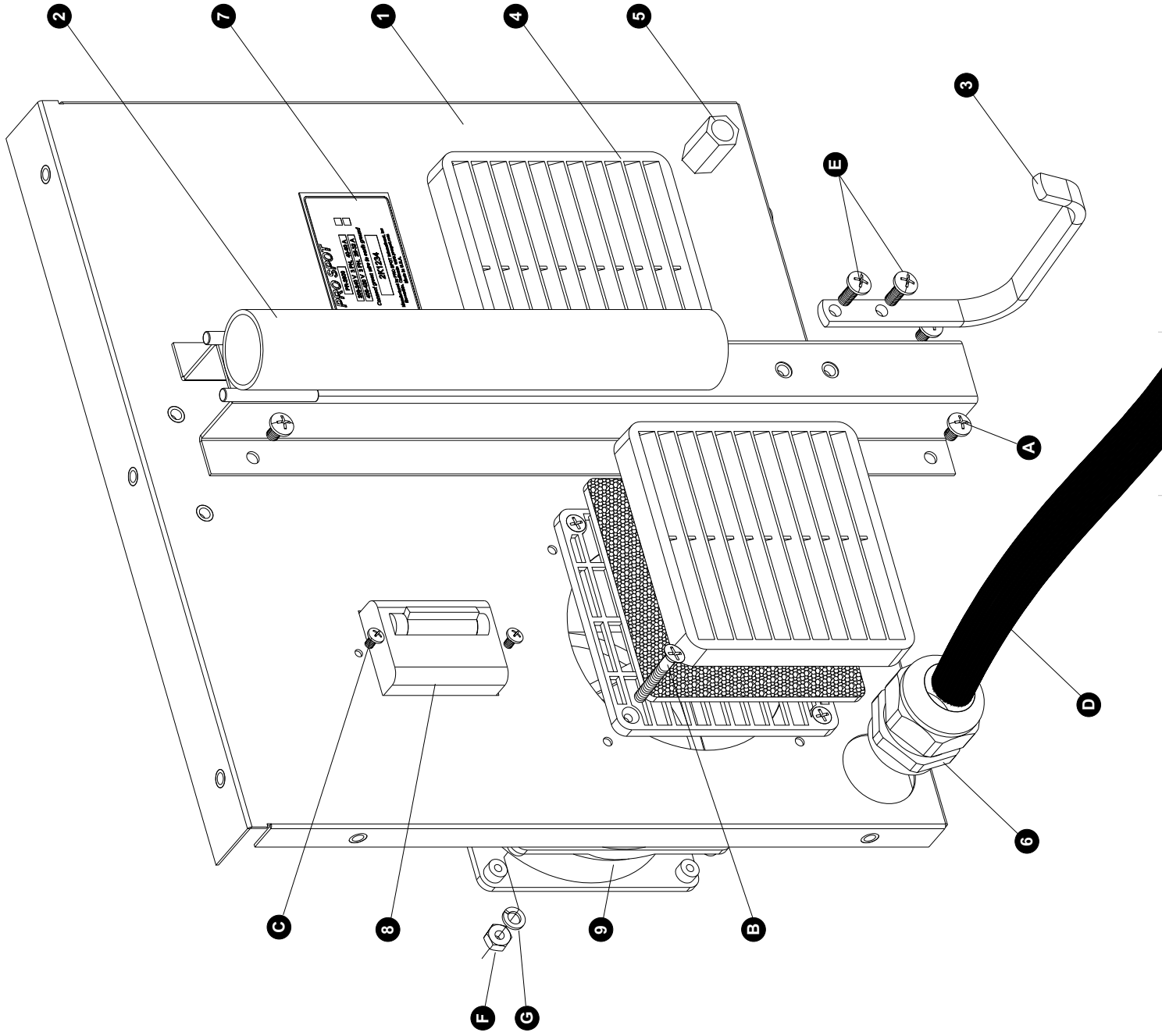
Item	Part#	Description	Qty.
1	PR-2000-01	Stand Bottom Frame	1
2	PR-2000-22	U-Arm Holder	3
3	PR-2000-WHE	Rear Wheel	2
4	PR-2000-13	Rear Wheel Axle Plate	2
5	PR-2000-31	Rear Wheel Axle	1
6	P10-05A	3.5" Front Caster	2
7	P10-35	2x4" End Cap	2
A	S-170	M8-16 PPHS Zink	16
B	S-62	M6-10 Phil. PH Screw	6
C	W-18	5/8" Washer	8
D	W-19	5/16" Lock Washer	16
E	SR-03	5/8" External Snap Ring	2
F	P-05	1/4-10 U-Bolt	2
G	N-06	1/4-20 Nut	4
H	W-20	1/4 Lock Washer	4

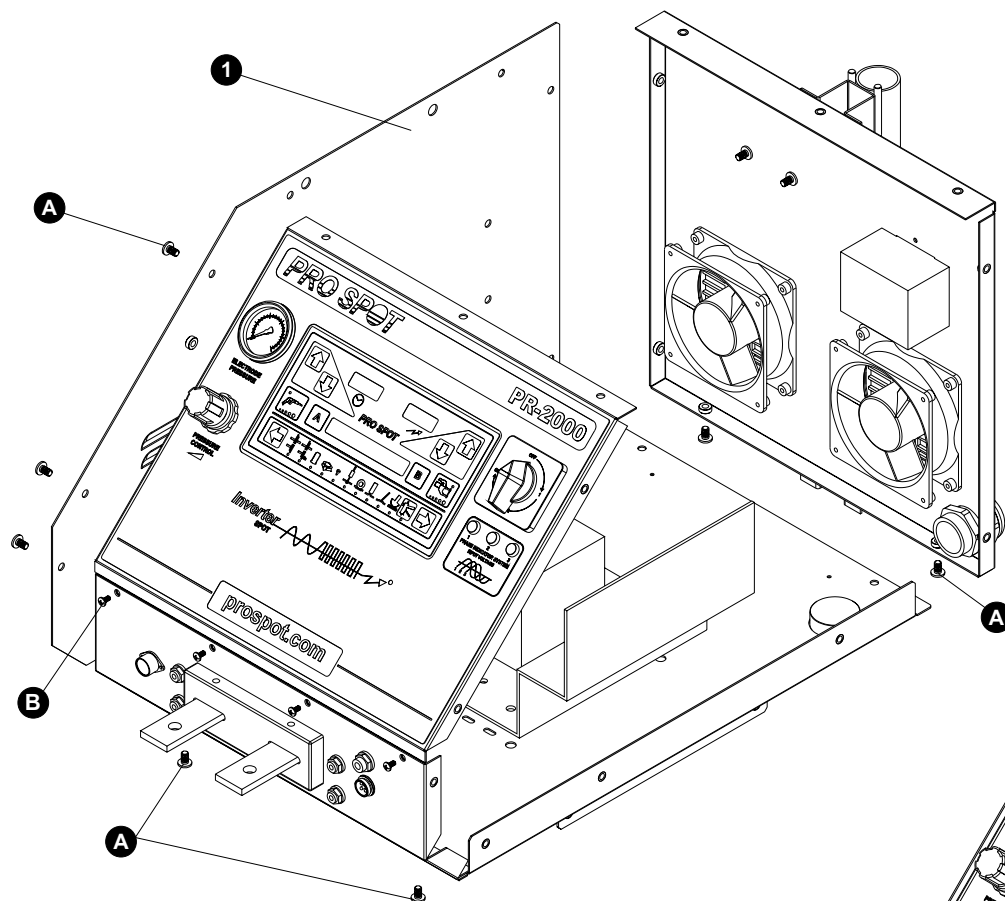


Item	Part#	Description	Qty.
1	PR-2000-06	Chassis	1
2	PR-2000-04	Stand Rear Member	1
3	PR-2000-02	Stand Left / Right Member	2
4	P6-18	Cable Holder	2
5	M-124	Euro Receptacle	1
6	PR-2000-Y2	Decal - Pro Spot (18")	2
A	S-170	M8-16 Large Head Screw	20
B		M3-12 Screw	2

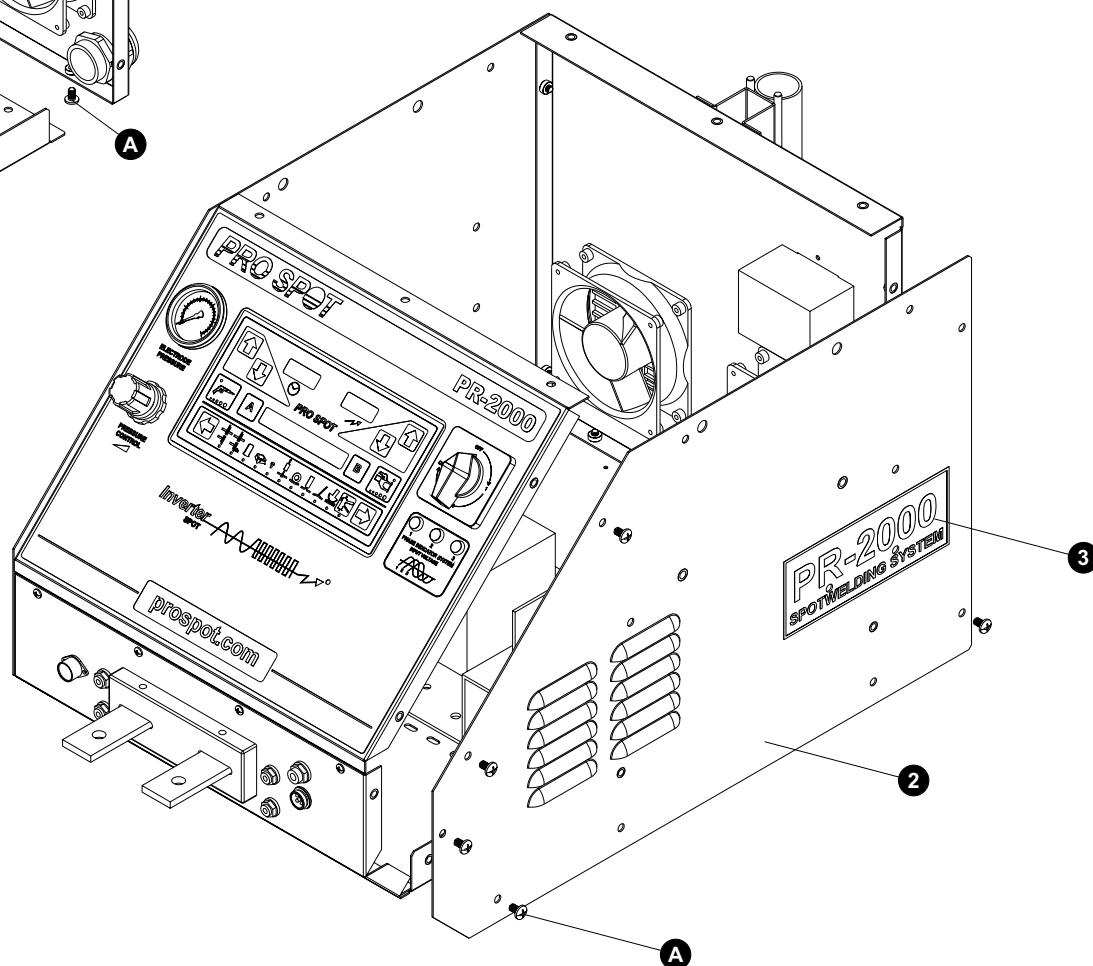


Item	Part#	Description	Qty.
1	PR-2000-08	Chassis Back Panel	1
2	PR-2000-15	Boom Bracket	1
3	P10-38	Zink Hook	1
4	PR-2000-12	Fan Guard	2
5	F-39	Air Fitting 1/4NPT - 1/4 line	1
6	P10-12	Strain Relief	1
7	PR-2000-45	ID Label	1
8		Circuit Breaker - Rear Panel	1
9		Cooling Fan	2
A	S-62	M6-10 Screw	4
B		8-32x3/4"L Flat Head Screw	8
C		8-32x2 1/2"L Screw	2
D	WL-13	6/4 Power Cable	30
E	S-44	M6-16 PHMS	2
F	N-07	8-32 Nut	1
G	W-11	#8 Lock Washer	1

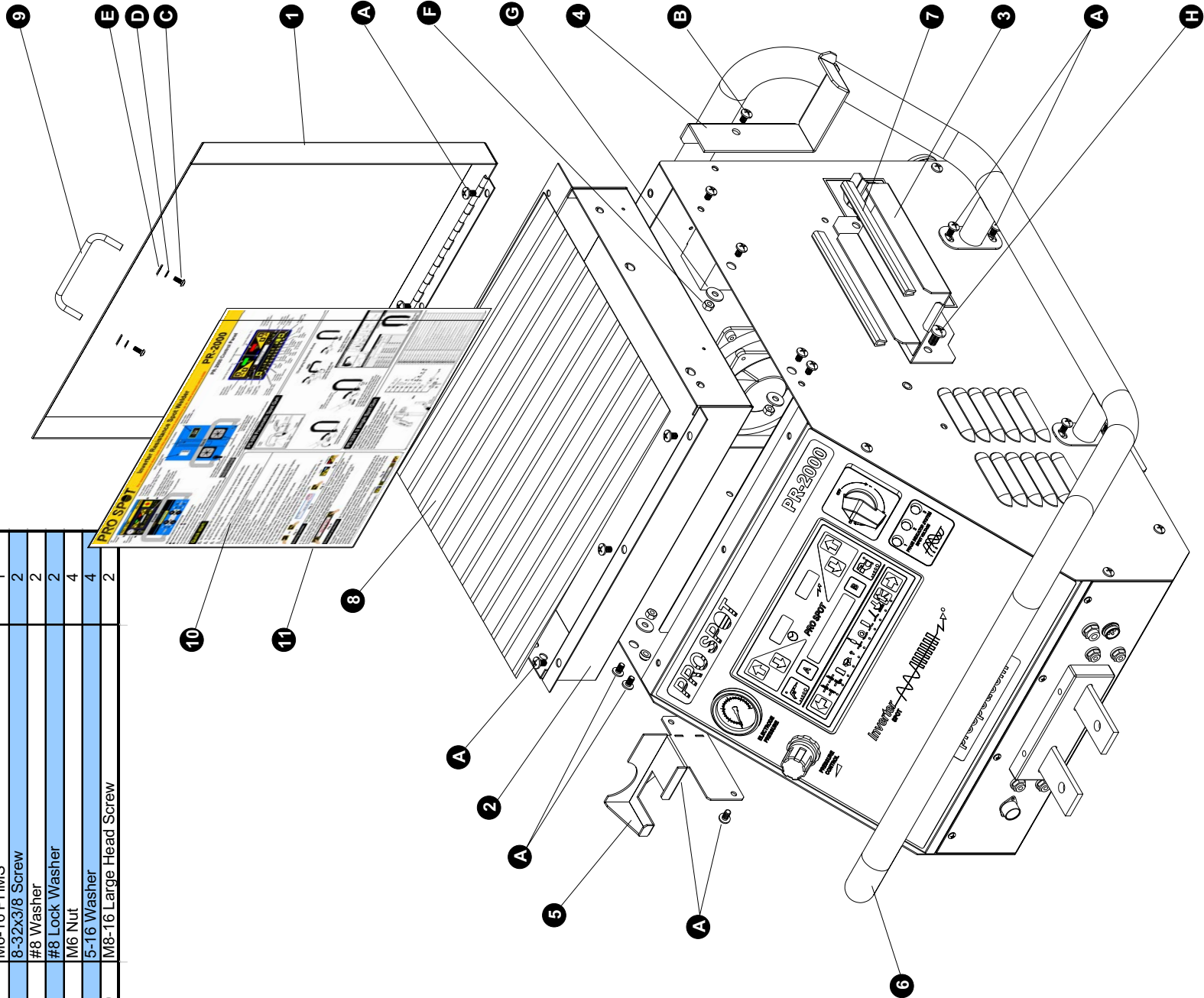




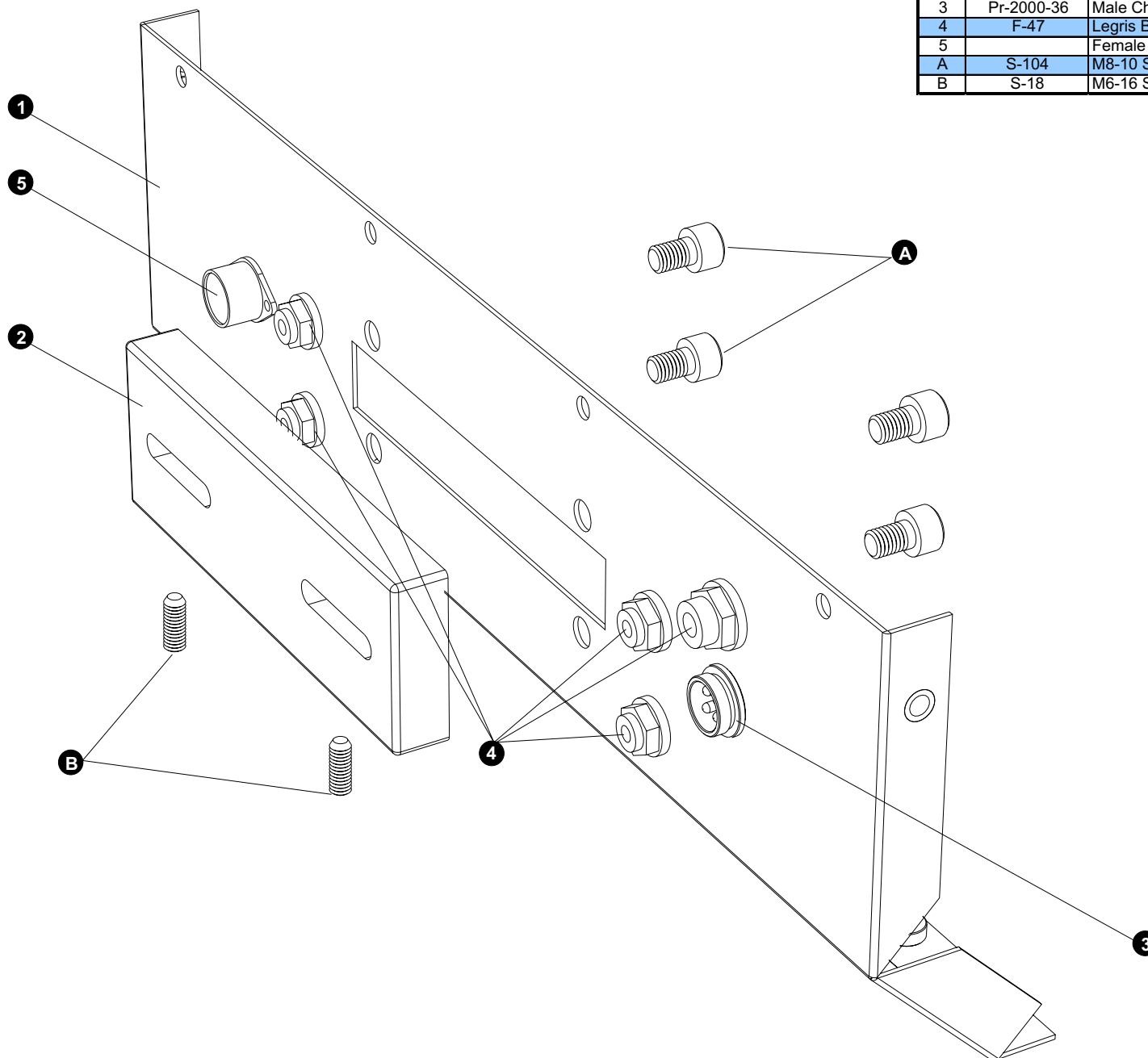
Item	Part#	Description	Qty.
1	PR-2000-27	Chassis Right Panel	1
2	PR-2000-28	Chassis Left Panel	1
3	PR-2000Y	Decal - Pro Spot Square	2
A	S-62	M6-10 Screw	15
B	S-79	M4-8 Screw	4



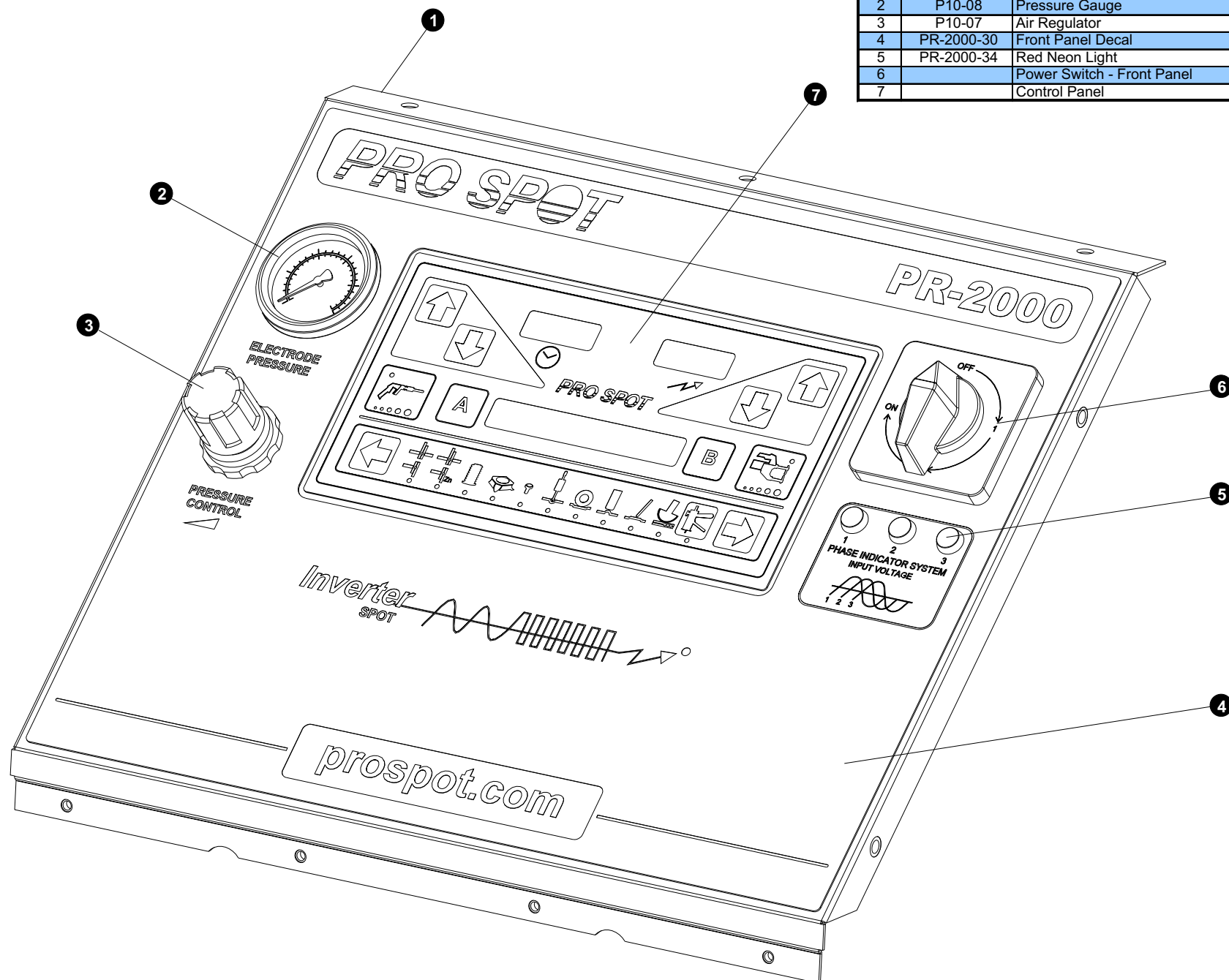
Item	Part#	Description	Qty.
1	PR-2000-07	Chassis Lid	1
2	PR-2000-05	Chassis Tool Tray	1
3	PR-2000-18	Spot Gun Holder	1
4	PR-2000-33	Cable Support Bracket	1
5	PR-2000-17	Single-Sided Gun Holder	1
6	PR-2000-09	Wrap-Around Handle	1
7	PR-2000-46	Vinyl Edge Trim 33/64"-1' L	11
8	M-142	Rubber Mat	1
9	PR-2000-37	Lid Handle	1
10	PR-2000-32	Lid Instruction Sheet	1
11	PR-2000-38	Vinyl Envelope for Lid Decal	1
A	S-62	M6-10 Screw	24
B	S-44	M6-16 PHMS	1
C	S-25	8-32X3/8 Screw	2
D	W-57	#8 Washer	2
E	W-11	#8 Lock Washer	2
F	N-03	M6 Nut	4
G	W-26	5-16 Washer	4
H	S-170	M8-16 Large Head Screw	2

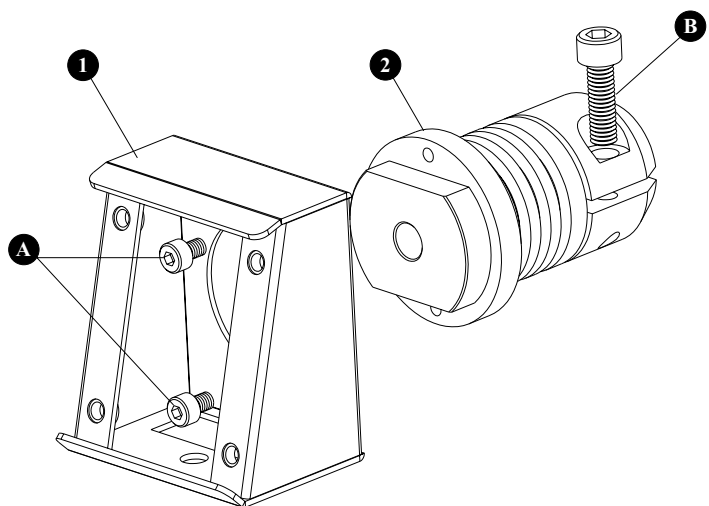


Item	Part#	Description	Qty.
1	PR-2000-29	Chassis Front Panel - Lower	1
2	PR-2000-10	Chassis Strain Relief	1
3	Pr-2000-36	Male Chassis Socket 4 pin	1
4	F-47	Legris Bulkhead Union Tube	5
5		Female Chassis Socket 5 pin (France)	1
A	S-104	M8-10 SHCS Zink	4
B	S-18	M6-16 Set Screw	2

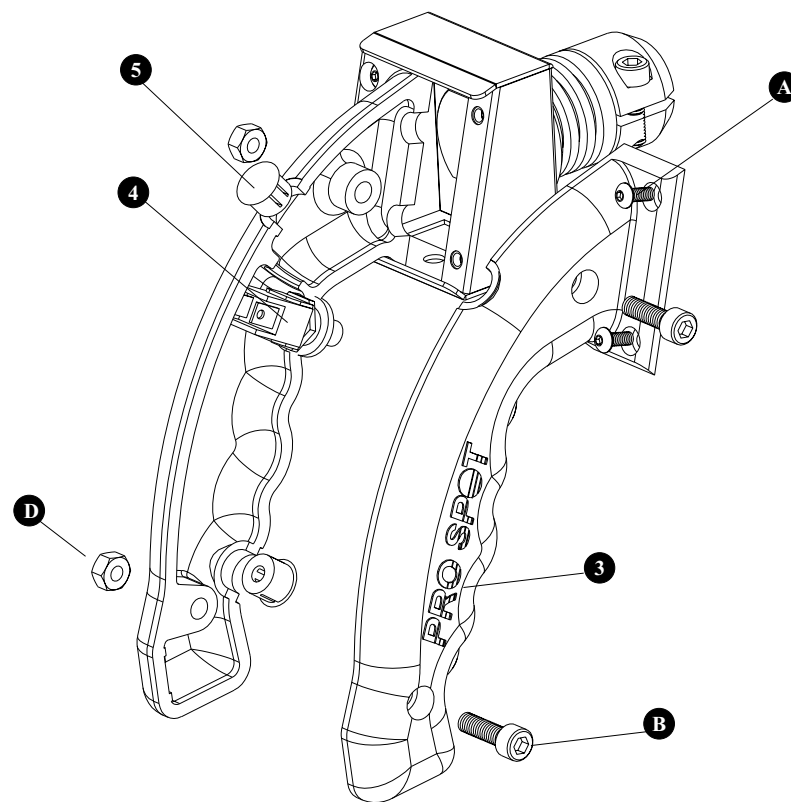
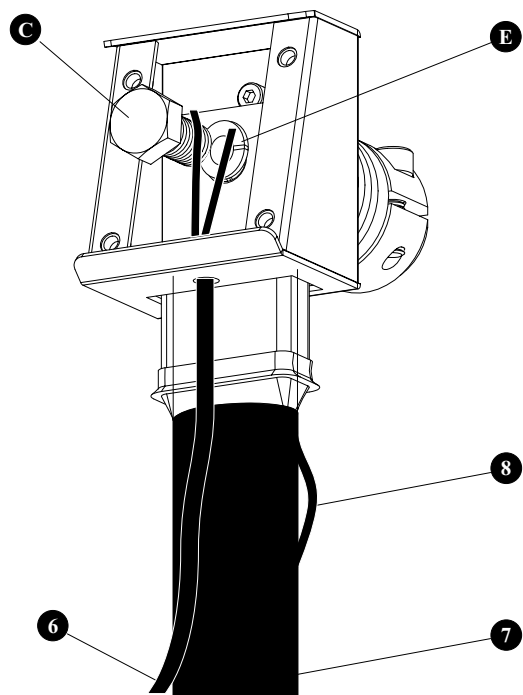


Item	Part#	Description	Qty.
1	PR-2000-11	Chassis Front Panel - Upper	1
2	P10-08	Pressure Gauge	1
3	P10-07	Air Regulator	1
4	PR-2000-30	Front Panel Decal	1
5	PR-2000-34	Red Neon Light	3
6		Power Switch - Front Panel	1
7		Control Panel	1





Item	Part#	Description	Qty.
1	PG-16	Handle Mounting Block	1
2	PG-15	Brass Electrode Holder	1
3	PG-14	Cast Handle	1
4	F-44	Switch	1
5	F-46	1/2" Nylon Plug	2
6	PR-2000-43	Single-Sided Command Cable Assembly	1
7	PR-2000-WC3	Weld Cable 350 mcm 7'L (84")	1
8	H-14	5/32 Black Poly Hose - 1'	2
A	S-86	M4-8 SHCS Zink	6
B	S-88	M6-20 SHCS Zink	3
C	S-138	M10-20 SHCS Zink	1
D	N-03	M6 Nut	2
E	W-65	M10 Lock Washer	1



1. Insert bolts (A) and secure it with nuts (B) as shown on Fig. 1
2. Attach MIG bottle holder (C) using 2 provided screws (D) for the top holes and 2 existing screws (E) for the bottom holes as shown on Fig. 2
3. Tighten all bolts firmly.
4. Attach two eye bolts as shown in Fig 3. and attach chain (F)
5. Insert MIG welder and place it on top of the bolts you attached in Step 1
secure the MIG welder with aprovided washer (K) and nut (B).
6. Connect electrical plug to two holes on rear member.

Part List:


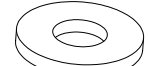

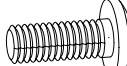

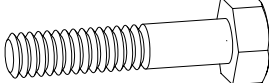
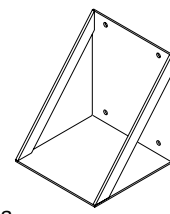

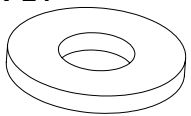
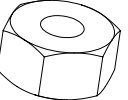
I: W-20 1/4" Washer  2ea.	J: W-15 1/4" Lock Washer  4ea.	H: N-06 1/4 - 20 Nut  4ea.	D: S-170 M8-16 Screw  2ea.	G: S-48 1/4 - 20 Eye Bolt  2ea.
A: S-119 1/2 - 13 Bolt  2ea.	C: PR-2000-23 Bottle Holder  1ea.	F: M-88 Chain  1ea.	K: W-24 1/2" Washer  2 ea.	
B: N-20 1/2 - 13 Nut  4ea.				

Fig. 1

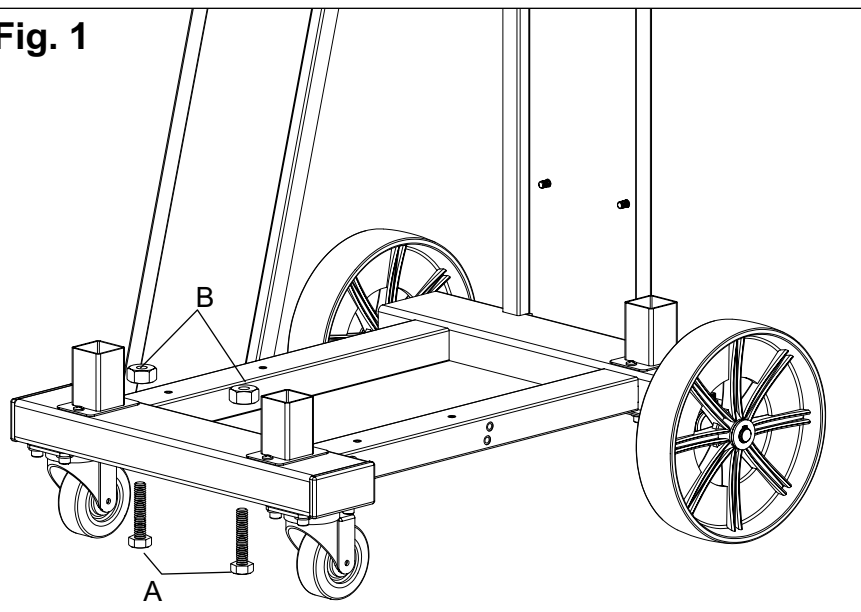


Fig. 2

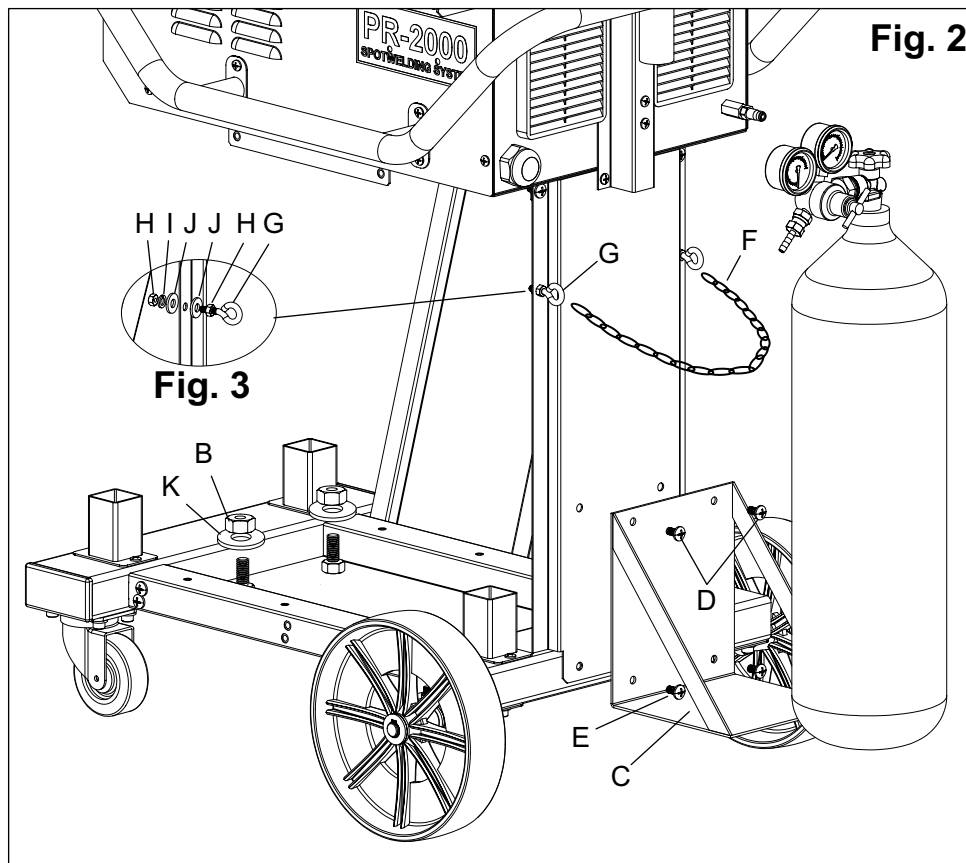
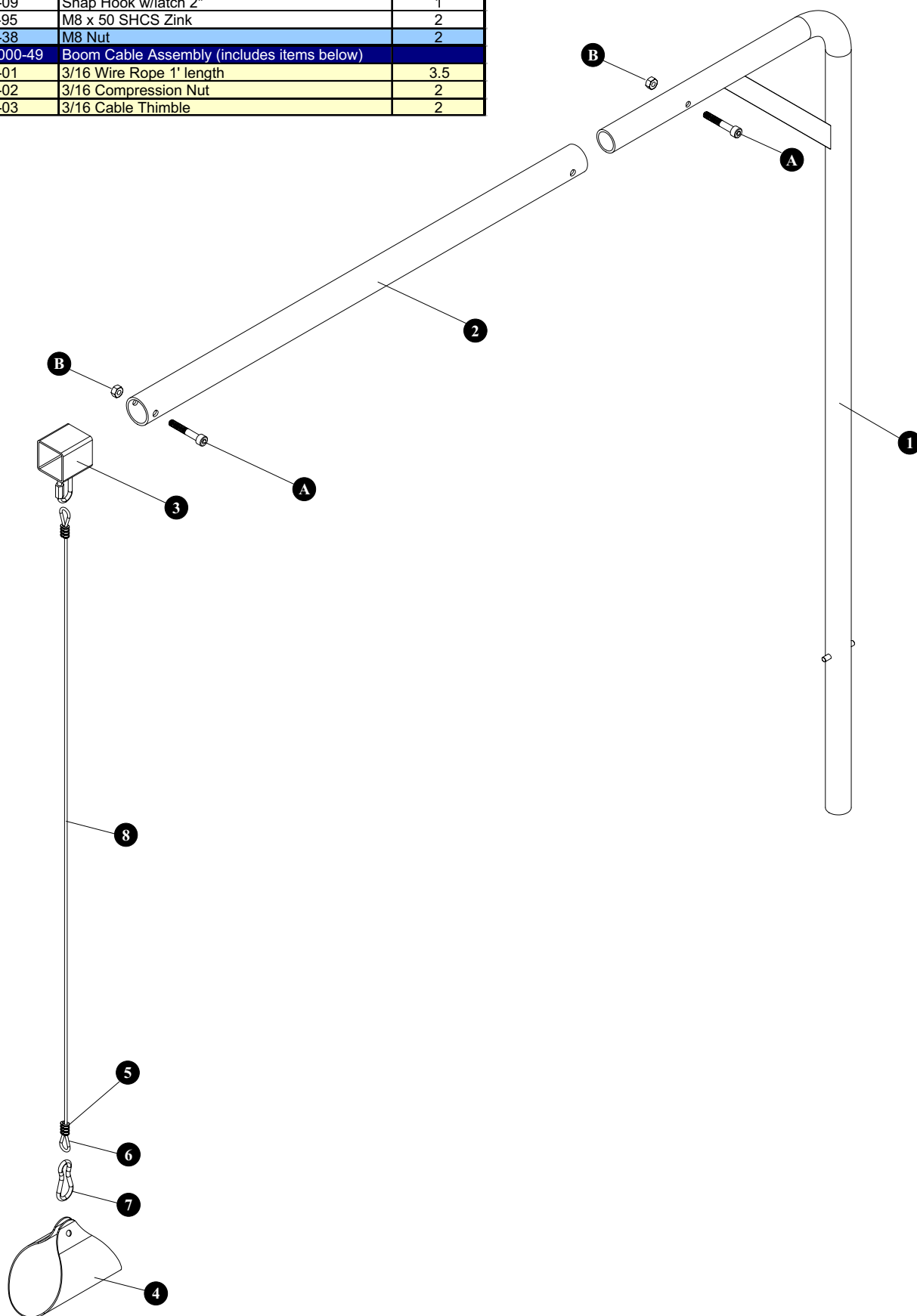


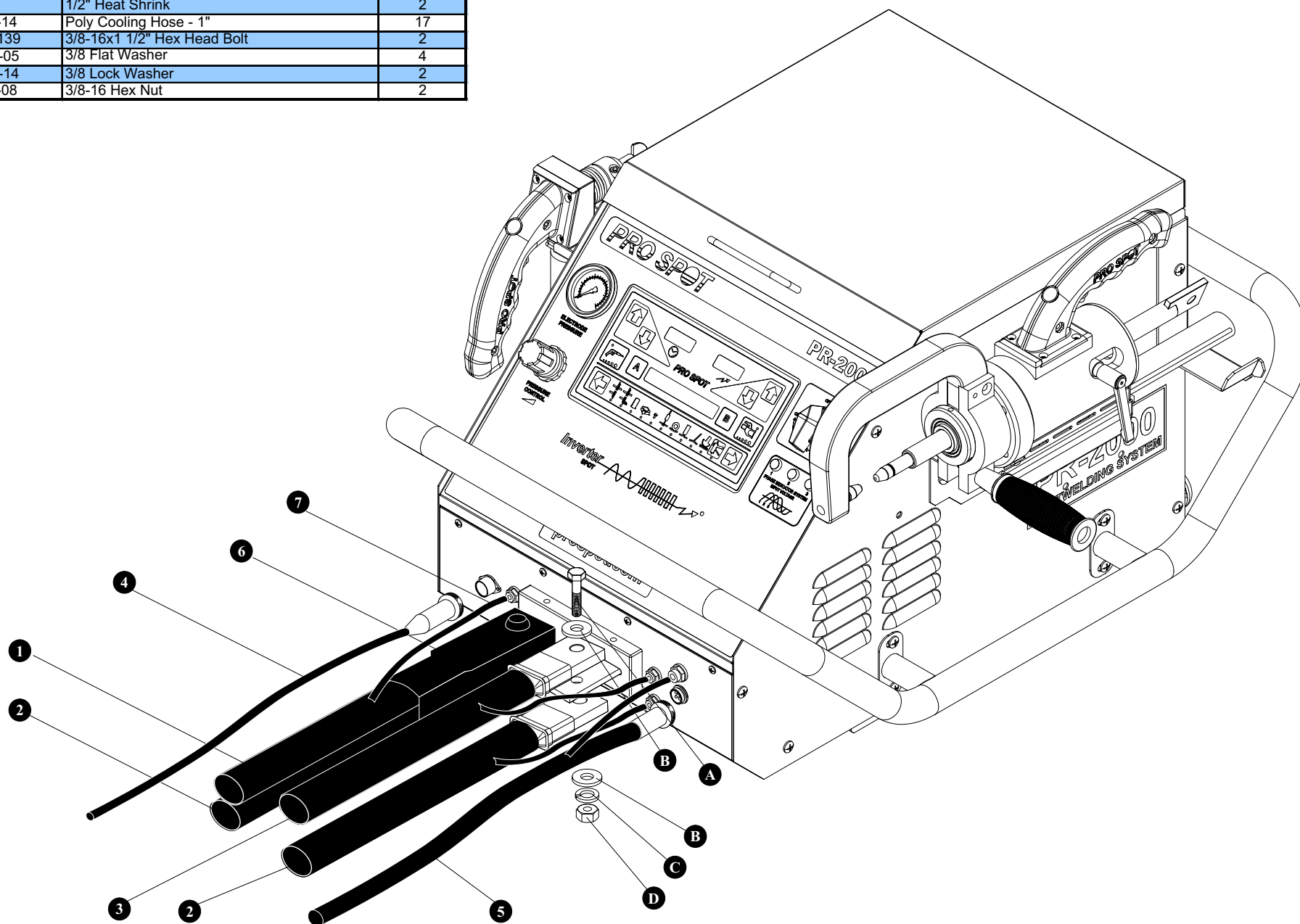
Fig. 3

Please NOTE: Side Member on this drawing has been removed for viewing purposes only! **Do not** remove side member on your welder during installation.

Item	Part#	Description	Qty.
1	PR-2000-16	Boom	1
2	PR-2000-19	Boom Extension	1
3	PR-2000-20	Boom Slide	1
4	PS-005	Cable Saddle	1
7	C-09	Snap Hook w/latch 2"	1
A	S-95	M8 x 50 SHCS Zink	2
B	N-38	M8 Nut	2
	PR-2000-49	Boom Cable Assembly (includes items below)	
8	C-01	3/16 Wire Rope 1' length	3.5
5	C-02	3/16 Compression Nut	2
6	C-03	3/16 Cable Thimble	2



Item	Part#	Description	Qty.
1	PR-2000-WC35	Negative Cable Spot Gun - 96"	1
2	PR-2000-WC3	Single-Sided Cable - 84"	2
3	PR-2000-WC	Positive Cable Spot Gun - 92"	1
4	PR-2000-43	Single-Sided Command Cable Assembly	1
5	PR-2000-44	Spot Gun Command Cable Assembly	1
6		1/2" Heat Shrink	2
7	H-14	Poly Cooling Hose - 1"	17
A	S-139	3/8-16x1 1/2" Hex Head Bolt	2
B	W-05	3/8 Flat Washer	4
C	W-14	3/8 Lock Washer	2
D	N-08	3/8-16 Hex Nut	2



Item	Part#	Description	Qty.
A	F-44	Switch	2
B	F-46	Plug 1/2 nylon unvented	1
C	F-53	90deg. 4mm - 6mm reducer	1
D	F-54	90deg. 6mm	1
E	F-55	90deg. 4mm	1
F	F-56	90deg. In-fitting 4mm	1
G	S-86	M4 x 8 SHCS	4
H	S-88	M6 x 20 SHCS	2
I	S-91	M8 x 20 SHCS	1
J	S-177	M6 x 8 cup point set screw	3
K	S-178	3/8 x 16 x 1-1/4 HH bolt	1
L	S-179	M4 x 10 Button Head Socket Cap	6
M	S-180	M4 x 30 phillips flat head screw	5
N	S-181	M4 x 8 cup point set screw	1
O	S-182	M4 x 6 cup point set screw	4
P	SR-09	1" external snap ring	1
Q	W-05	3/8" flat washer	1
R	W-14	3/8" lock washer	1
S	W-16	5/16" flat washer	1
T	W-19	5/16" lock washer	1
U	N-03	M6 nut	2
V	N-08	3/8 x 16" hex nut	1
W	H-14	4mm Black Poly Hose - 1"	1.5
X	H-15	6mm Black Poly Hose - 1"	4
Y	M-170	#214 O-Ring	2
Z	M-171	#232 O-Ring	2
AB	T-19	24-18 AWG Socket Connector	6
AC	T-21	24-18 AWG Pin Connector	6
AD	T-52	3-pin Female Housing	1
AE	T-55	3-pin Male Housing	1

Item	Part#	Description	Qty.
1	PG-01	Cylinder Housing	1
2	PG-02	Cylinder Head	1
3	PG-03	Double Acting Shaft	1
4	PG-05	Static Piston	1
5	PG-06	Dynamic Piston	1
6	PG-08	Bushing	1
7	PG-09	Bushing Collar	1
8	PG-10	Upper Rear Cover	1
9	PG-11	Cable Support Cover	1
10	PG-12	Electrode Shaft	1
11	PG-13	Wire Channel Cover	1
12	PG-14	Cast Handle	1
13	PG-18	Spring	1

