

Model : MWS-DA5

Component List (Aluminum Weld Station-Drawn Arc)

PRO SPOT

ORDER ONLINE @ shop.prospot.com



SHIPPING DATA:

Box 1
Dimensions: 37" x 15" x 30.5"
Weight: 175lbs. (79.4 Kg.)

MWS-DA5 Serial #

Checked By:

Instruction Manual

MWS-DA5 Includes

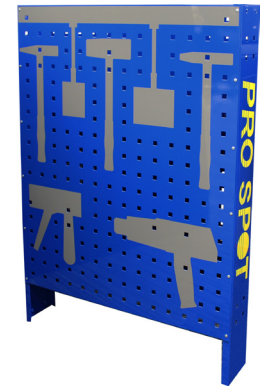
Cart Assembly

SA-0334 : Work Station Cart Assembly



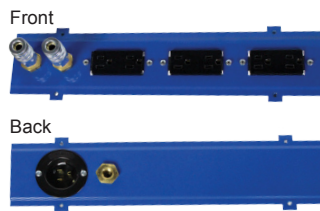
1 ea.

SA-0156 : Tool Board Assembly



1 ea.

SA-0195 : 110V Utility Panel (Kit)



1 ea.

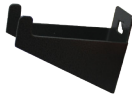
SA-0344 : Name Plate Assembly



1 ea.

Accessories

90-0197 : Single Hook



4 ea.

90-0211 : Snap Hook, Med



3 ea.

90-0199 : Gun Hook



2 ea.

90-0243 : Cable Hook



1 ea.

S-1212 : #12 x 1/2" Phillips Screw



(For Re-order)

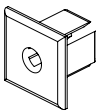
15 ea.

90-0207 : Heat Gun Hook



1 ea.

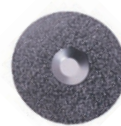
52-3211 : License Plate Nut



(For Re-order)

15 ea.

85-9578 : 2" Abrasive Disc 100 Grit (5 pack)



1 ea.

85-9559 : 2" Disc Holder for Air Die Grinder



1 ea.

85-3088 : Air Grinder



1 ea.

90-0032 : Vertical Mount Straps



2 ea.

PR0-65 : Single Pull Pro Pull



1 ea.

90-0148 : Side Extension Panel



4 ea.

SA-0032 : Aluminum Hammer Set



1 ea.

85-0200 : Heat Gun



1 ea.

85-0421 : Infrared Laser Thermometer



1 ea.

89-1509 : Cool Gel Heat Barrier Spray



1 ea.

Model : MWS-DA5

Component List (Aluminum Weld Station-Drawn Arc)

MWS-DA5 Included Continued...

SA-0448 : Accessories



Includes:

- 50-0580 : Stainless Steel Brushes (3 ea.)
- 51-0059 : Pulling Rod (2 ea.)
- CLT-58 : 4mm Allen Wrench (1 ea.)

1 ea.

PB-10 : Pull Bar Dent Pulling System



1 ea.

PS-DA5 Drawn Arc



SHIPPING DATA:

Box 1
Dimensions: 28" x 28" x 18"
Weight: 95lbs. (43 Kg.)

PS-DA5 Serial#

Specifications:

208-240V 3 Phase 50/60Hz @ 40A
Max Output 500A @ 20V

Checked By:

SA-0233: Drawn Arc Torch



1 ea.

84-5002: Ground Cable



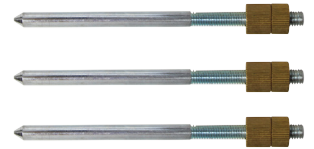
2 ea.

84-5003: Curved Stabilizing Leg



1 ea.

84-5004: Straight Stabilizing Legs



3 ea.

84-5005: Key Torch Head



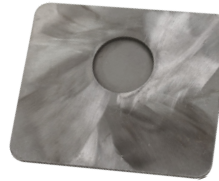
1 ea.

84-5006: Stud Torch Head



1 ea.

84-5009: Calibration Plate



1 ea.

50-0011: M4 Aluminum Studs



50 ea.

84-5007: Gas Hood



1 ea.

SA-0462: Regulator Assembly



1 ea.

84-5008: Stabilizer Mounting Plate



90-1275: Retaining Nut



1 ea.

Stud Electrode

- 50-5501: M4
- 50-5502: M5
- 50-5503: M6
- 50-5504: M8



1 ea.

50-0012: Straight Aluminum Keys



100 ea.

50-0013: Twisted Aluminum Keys



10 ea.

90-1172: Gun Saddle



1 ea.

S-43: Mounting Screws



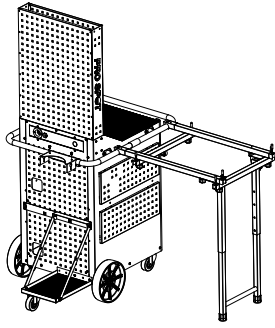
2 ea.

Model : MWS-DA5

Component List (Aluminum Weld Station-Drawn Arc)

PRO SPOT
ORDER ONLINE @ shop.prospot.com

SA-0143 : Work Station Bottle Support Kit



<input type="checkbox"/> Hardware Kit S-43 (10) S-170 (4) S-1212 (2) 52-3211 (2)	<input type="checkbox"/> i4-37 : Stop, Cylinder
<input type="checkbox"/> M-88 : 24" Chain	<input type="checkbox"/> i4-28 : Bottle Shelf Support Strap (2)
<input type="checkbox"/> i4-33 : Upper Support Bracket Outer	<input type="checkbox"/> 90-0686 : Bottle Bracket
<input type="checkbox"/> i4-34 : Upper Support Bracket Inner	<input type="checkbox"/> P10-06 : 3-1/2" Swivel Caster
<input type="checkbox"/> i4-27 : Lower Bottle Shelf	<input type="checkbox"/> W-20 (4) <input type="checkbox"/> W-15 (4) <input type="checkbox"/> N-03 (4)

Consumables

50-0580 : Stainless Steel Brushes



3 ea.

MWS-DA5 Accessories (Optional)

80-0005 : Protective Cover For MWS-AL



(Optional)

1 ea.

SA-0027 : Adjustable Work Bench

Includes:



(Optional)

- 90-0205 : Cup Hook (2 ea.)
- S-660 : Phillips Screw (6 ea.)
- 52-3211 : License Plate Nut (4 ea.)
- S-1212 : #12 x 1/2" Phillips Screw (4 ea.)
- 52-6448 : Rubber Finger Grip (6 ea.)

1 ea.

CLP-73 : Lever Bar



(Optional)

1 ea.

PB-20 : Advanced Pull Action Adapter For PB-10 Pull Bar



(Optional)

1 ea.