

Model: MWS-AL-COMPLETE-C

Components List: CL-MWS-AL-COMPLETE-C

PRO SPOT

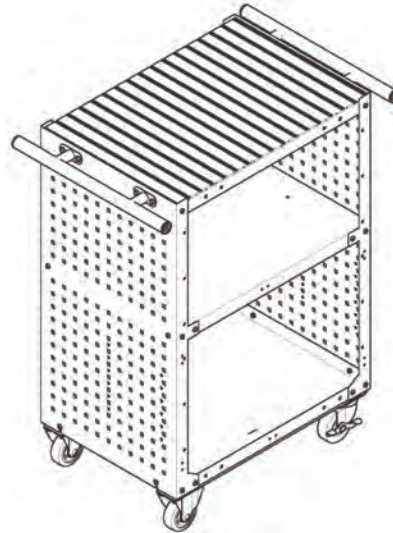
ORDER ONLINE @ store.prospot.com



MWS-AL-COMPLETE-C Serial # Checked By:

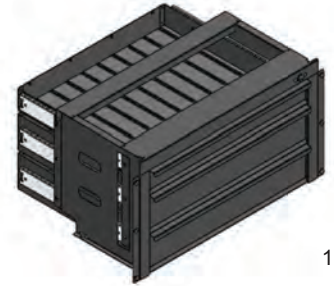
Includes Cart Assembly

SA-0706: Basic Cart, Short 3.5" Casters, MWS-G2



1 ea.

SA-0666-BOTTOM: Modular Drawer Kit



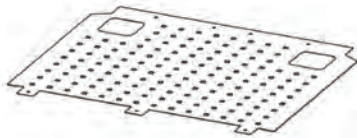
1 ea.

63-0033: 110V Power Strip, 6-Outlet, 2-USB



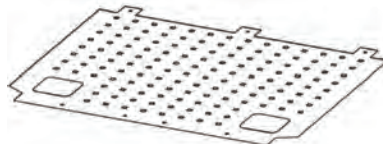
1 ea.

90-2068: Back Panel, Top, Tool Board



1 ea.

90-2114: Back Panel, Bottom, MWS-G2



1 ea.

90-2247: Rubber Mat



1 ea.

Bundled Products

DA-3 220V: Drawn Arc Dent Puller



1 ea.

PB-10: Pull Bar 4-footed



1 ea.

PRO-65: Pull Gun Assembly



1 ea.

Aluminum Accessories

89-1509: Cool Gel Heat Barrier Spray



1 ea.

85-0200: Heat Gun (110V)



1 ea.

85-3088: Air Grinder



1 ea.

85-0421: Infrared Laser Thermometer



1 ea.

SA-0032: AL Hammers, 3-piece set



1 ea.

85-9559: Abrasive Disk Holder, 2" Diameter.



1 ea.

85-9578: Abrasive Disk, 2" Diameter.



5 ea.

Model: MWS-AL-COMPLETE-C

Components List: CL-MWS-AL-COMPLETE-C

PRO SPOT

ORDER ONLINE @ store.prospot.com

Mounting Accessories

S-1212:
Nut Screw
#12 X 1/2", ZINC)



17 ea.

52-3211:
Tool board
Nut



17 ea.

90-0197:
Single Hook



4 ea.

90-0198:
Tool Board
Attachment



1 ea.

90-0199:
Gun Hook



2 ea.

90-0211:
Snap Hook



3 ea.

90-0243:
Cable Hook



1 ea.

90-0207:
Heat Gun/
Drill Hook



1 ea.